

HCO Panda GSM Quick Setup Guide

Getting the SIM Card for Your Camera:

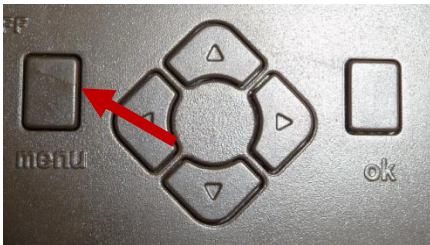
We recommend that you go to an AT&T or T-Mobile company store and ask for a SIM card with a basic prepaid plan and unlimited MMS messages. Plans should be no more than \$19.99 per month. **Make sure they activate your SIM card at the store.**

Setting Up Your Panda GSM Camera for Sending Pictures:

1. Open your camera.
2. Insert your SIM card and a clean (formatted) SD card into their appropriate places on the camera.
3. Once that is done, look for the slider switch on the left side of the camera. It should have three options: "OFF", "SETUP", or "ON". Push to "SETUP".



4. Next hit the "MENU" button on your camera.



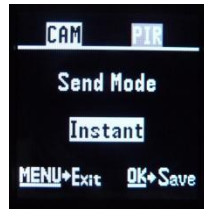
5. Once your menu screen pulls up, using your side arrow buttons, move over to the "GSM" tab. Then scroll down to the "Send Mode" option.



6. Change "Send Mode" to "Instant" with your right arrow, and hit "OK".

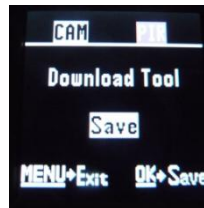
7. Enter your preferred number of pictures sent per day (0-99), and hit "OK".

8. Now you should be in the "CAM" tab with a screen like this:



9. Scroll down to where you see "Send Via", and make sure it is set to "MMS". Hit "OK".

10. Scroll further down until you see the "Download Tool" option.



11. Hit the "OK" button on your camera, and the UOV Setup tool you need to continue setup will be downloaded to your SD card.

12. Turn off the camera, and eject your SD card. Now insert it into your computer's SD card slot.

13. Once you pull up the SD card folder on your screen, right-click on a WinZip folder called "GSMSetup", and choose "Extract All...".

14. Before hitting "Extract" at the bottom of the window, make sure that in the text box to the left of "Browse...", you delete everything except the drive letter like so:

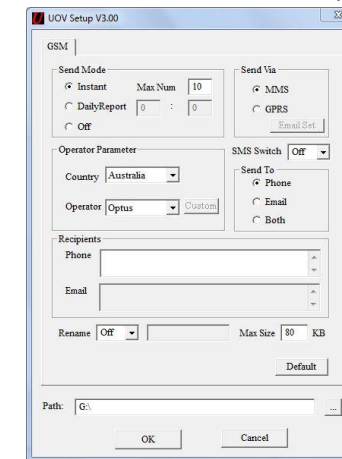


- Here, the drive letter for your SD card is "G:" but depending on your computer, it may be a different letter.
- **DO NOT** modify the drive letter.
- Now hit "Extract..."

15. Now the following files will be in your SD card folder:

Name	Date modified	Type
DCIM	1/1/2011 1:17 AM	File folder
GSMSETUP	1/1/2011 1:22 AM	Compressed (zipp...
UOV Setup	5/28/2012 4:28 PM	Application

16. Double-click on "UOV Setup", and this screen appears:



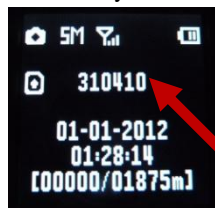
17. For now, verify that you previously setup your camera with these values:

- “Send Mode” should be set to “Instant”.
 - “Send Via” should be set to “MMS”.
18. After that, simply choose your country, cell phone operator, and whether or not you would like to receive messages through your phone, email, or both. Enter phone and email addresses as needed.
 - Make sure the phone number is 10 digits with no spaces or dashes.
 - Again, do not change the drive letter.
 19. Hit “OK”, and now your settings should be complete.
 20. Remove the SD card from your computer and reinsert it into your camera.

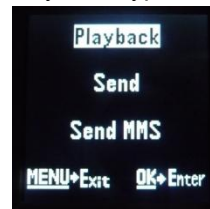
Sending a Picture Manually with Your Panda GSM

Camera:

1. If you do not already have images on your camera, go ahead and take one.
 - To do so, first switch your camera to the “SETUP” mode. If you have just set up your camera for sending, you will see the message “Update Success”.
 - Then you will see the “Checking” and “Searching...” messages while you wait for the connection to be obtained, as indicated by the 6-digit connection code in the center of your screen.



- Note, if the number does not appear, but rather the camera shows a box with an X on the left side of the screen for more than 30 seconds, simply shut the camera off and try again. You may be in an area with bad signal.
 - Now simply point the camera where you want, and take a picture by pressing the right arrow button.
2. Now hit the “OK” button to see a playback of your image.
 3. Next hit “MENU”, and you should see this screen. Scroll down to where “Send MMS” is highlighted, and hit the “OK” button on your keypad.



4. Now you should see the camera going through a series of 10 steps to send the picture.
5. If the screen says, “Sent Successfully”, then the picture should now send to your specified phone or email.

Sending a Picture Automatically with Your Panda GSM Camera:

1. Make sure your camera is on “SETUP” mode and you have a connection.
2. Now hit the “MENU” button and go to the “PIR” section with your arrow buttons.



3. Next make sure to set the “Trigger Interval” to at least **2 minutes** as the camera takes a minimum of 45 seconds to send an image.
4. Then switch the camera to “ON”, close it, and wait for the red light on the front of your camera to flash several times.
5. Now your camera can automatically take and send pictures.



Phone: 1-770-582-0004

Fax: 1-770-582-0335

Email: support@hcooutdoors.com

Web: www.hcooutdoors.com